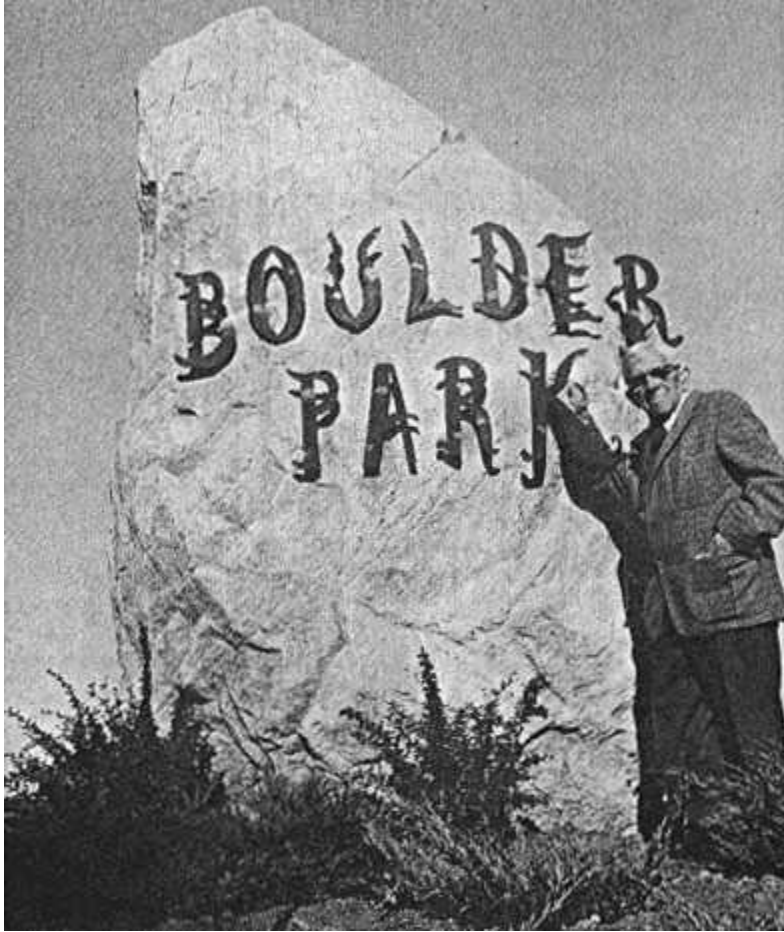


From the Charlevoix Courier (?), in the 1970s (?)



BUILDER AND Realtor Earl Young poses in front of 40-ton boulder which he recently had mounted at the entrance to Boulder Park on Lakeshore-dr. Young had the boulder moved from South Point to the park 40 years ago, but never got around to having it righted and landscaped until this summer. Last Saturday night, Boulder Park residents gave a surprise party for Young on the shore -- their way of saying "thank you." They also plan to have a plaque affixed to the stone in recognition to Young's many contributions to Charlevoix.